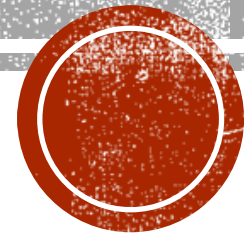




MANSON GRANGE CAPITAL IMPROVEMENT PROJECT



LET'S TALK ABOUT THE MANSON GRANGE



- The Grange organization has served the Chelan valley for over 100 years.
- Volunteers built the Grange building in 1945.
- The Hall has a total of 8,750 square feet of space, with 4,375 square feet on each of the two floors.
- The Grange strengthens individuals, families and communities through grassroots action.

Left to Right: Will Harding, D. B. Ward, Nell Butterbaugh, Helen Ward, C. F. Keiser (Deputy State Master), P. A. Campbell, Ruth Spray, Opal Fort, Joe Killian, Bryan Fellers, Charles Lester, Lillian McNichols, Lena Gibson, James Danilson, Mrs. Ed Thompson, Frank Butterbaugh, Mildred Lester, Harold Fort, Irma King, Ruth Butterbaugh, Harry Shotwell, Ed Finch, Tillie Hahn, Emma Smith, Ed Thompson, Elmer King, Pearl Finch, Tina Chandler, John Byrne, Millie Byrne, Ed Walls, Anna Reaugh, J. M. Chandler, Harry Reaugh, Louis Sorenson, Leonard Hahn, LaRue Barkley, M. E. Watkinson, James Staples, Ora Thomas, Mrs. Harry Shotwell, Lena Debar, Ernest Johnson, Harold Riker, Everett Smith, James Debar, Jacob Debar, Willis Griffith.

McClelland Photo, Manson Wn.



GOALS

A. Building

- Renovate and add restrooms making them universally accessible.
- Build a ramp to provide access to both floors.
- Restore and update interior finishes.
- Update current heating and cooling systems.
- Clean and modernize the entrance to create a safe and attractive front entrance.



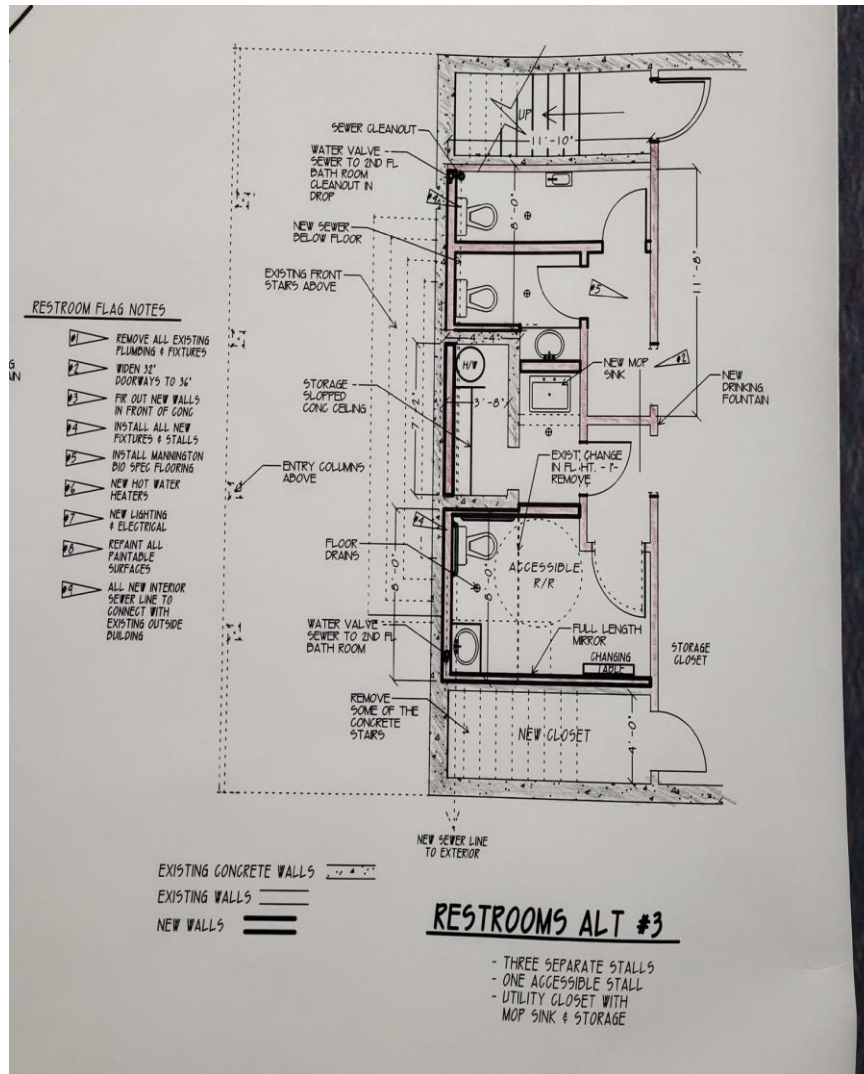
B. Programs

- Create relevant programs and events for the community.
- Continue to support the Grange legacy.



THE 7-PHASE PLAN

Phase 1 - Basement Bathrooms



Phase 1
 Basement Restrooms. Renovate existing bathrooms, modify for accessibility - Update sewer & plumbing lines. \$45,000

Phase 2
 HVAC System. Replace basement furnace/AC, windows, and upstairs heat pump \$38,000

Phase 3
 Construct a roof over the accessible ramp. \$48,000

Phase 4
 Construct 200 feet of accessible ramps for access to each floor \$187,000

Phase 5
 Enlarge and replace existing upstairs bathroom and add an additional bathroom \$39,000

Phase 6
 Interior - Refinish wood floor, trim & wainscoting, replace carpet \$66,000

Phase 7
 Front Entry - Remove barriers to entry, improve lighting, install handrails and paint exterior - \$50,000

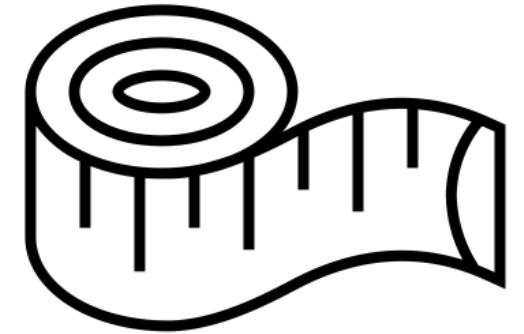


OUR PLAN FOR SUCCESS

- Partner with other local entities.
- Continue to create awareness and opportunity through marketing efforts.
- Research pathways for financial opportunities including grants, fundraisers, rentals, and donations.
- Create sustainable and enforceable systems and processes.
- Recognize, support, and enlist people and organizations, that support the Grange.
- Frequently revisit our mission and activity for relevance and success.



MEASURING SUCCESS



- Is the Manson Grange Building safe, efficient, attractive, and universally accessible?
- Have we increased membership every year by at least 15%?
- Do we have diverse programs and events?
- Have we created top-of-mind awareness from our community (social media numbers and increased inquiries)?
- Are our processes and procedures effective and manageable?
- Have we obtained financial sustainability with reserves to give back to the community?
- Do we have the volunteers to sustain and manage our programs and rentals?
- Is our mission and vision in alignment with the Washington State Grange and relevant for our community?

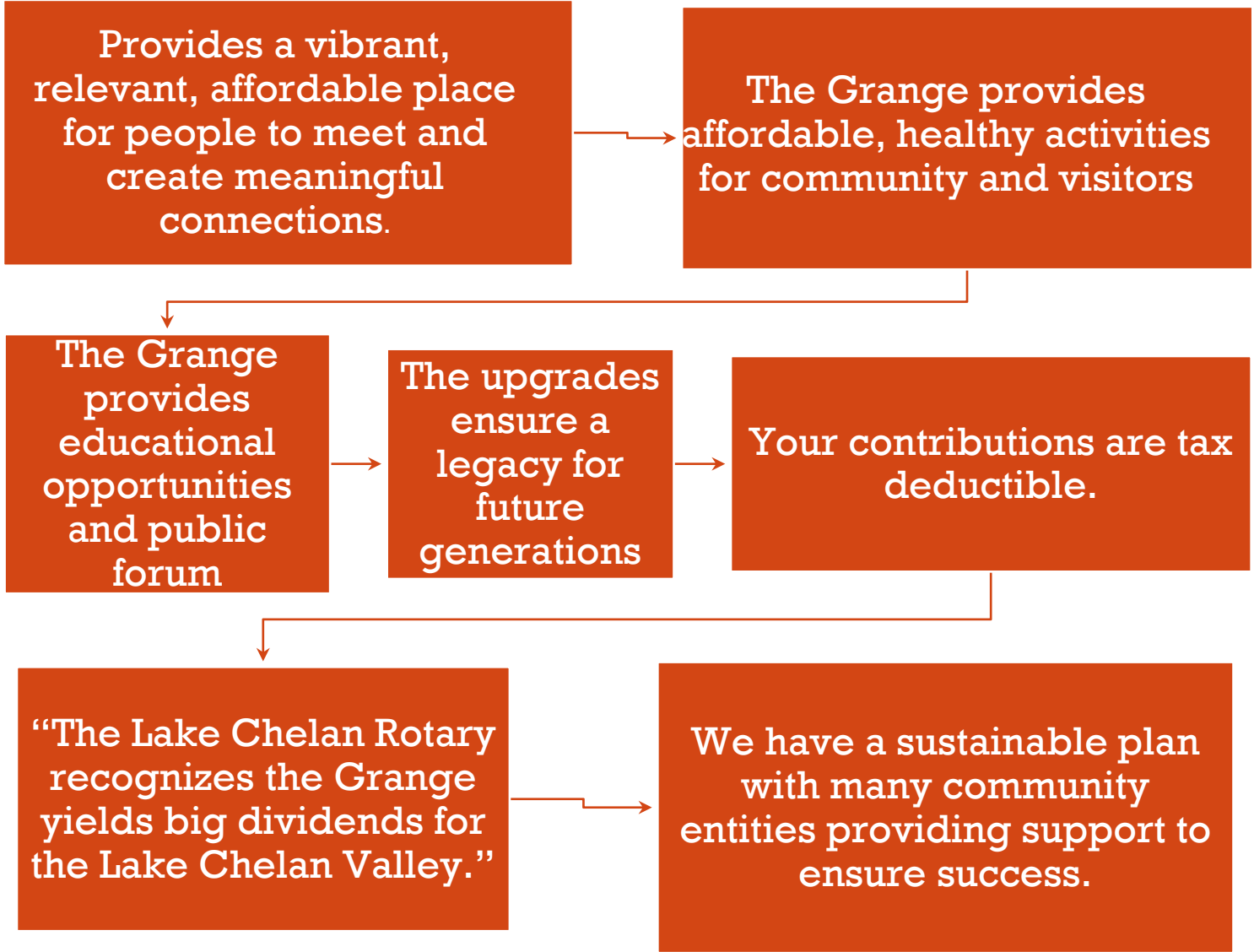


CURRENT STATUS

- We have funding for Phase 1 and will be starting the downstairs bathroom renovation in April 2024.
- We have several grant requests submitted for approval and have received \$193,000 from the State Legislature.
- We currently have several programs and rental opportunities in place, which we anticipate will self-fund the Grange.
 - ❑ Youth Fairs
 - ❑ Bingo – A Grange activity
 - ❑ Zumba – Partnering with the Manson Parks
 - ❑ Line Dancing – Partnering with the Manson Parks
 - ❑ Pickleball – Partnering with the Manson Parks
 - ❑ Community Garage Sale – A Grange activity - May 18th
 - ❑ Sunday Church Service
 - ❑ Rentals for Birthdays, Anniversaries, Baby Showers, Quinceaneras, Weddings & More!



WHY SHOULD I PARTICIPATE?



WHAT CAN I DO?



- Consider making a donation. Every dollar helps us reach our goal.
- Do you have a skill, talent or something you can donate to help our construction team?
- Do you have a class, activity, hobby or educational opportunity you can spearhead at the Manson Grange?
- Volunteer to assist with a class, rental support, organizational committee, fundraising and grounds keeping.
- Consider serving on the grange board. There are several seats with minimal commitment.

For more information visit

www.mansongrange.com

or email info@mansongrange.com



DONATION RECOGNITION

Patrons for Preserving the Manson Grange



- **Planters**
Donations between \$200-\$499
- **Cultivators**
Donations between \$500-\$999
- **Stewards**
Donations between \$1000-\$2999
- **Producers**
Donations between \$3000-\$4999
- **Harvesters**
Donations over \$5000



HOW TO GIVE

- Make your check payable to the Washington State Grange Foundation (if \$500 or over) or payable to Manson Grange #796 (under \$500)
- Mail checks to:
Manson Grange, P.O. Box 306, Manson, WA 98831
- **CREDIT CARD** payments can be made through Zeffy – Link is available on our website.
www.mansongrange.com
- A receipt will be mailed for all donations.





To find out where and how to donate visit:

www.mansongrange.com

Email:

info@mansongrange.com

Mailing Address:

PO Box 306

Manson, Wa 98831